

Sixth Form at DBS Emirates Hills



2025/26 ACADEMIC YEAR

www.dubaibritishschool.ae



Vision, Mission and Values

Enjoy • Aspire • Achieve

MISSION STATEMENT

Dubai British School Emirates Hills is a safe and happy community where achievement and effort are celebrated. Embracing local and modern British values, we strive to inspire and challenge young minds in a supportive and tolerant international environment. We believe in supporting all members of the community to develop the necessary life and learning skills to thrive in an ever-changing global world.



Integrity • Respect • Kindness • Fairness • Tolerance

VALUES

At DBS Emirates Hills we believe that people who have high levels of emotional, behavioural and social wellbeing live happy, purposeful and productive lives. Our approach is to develop a learning community which is positive, engaged and connected in line with our school's values of: Tolerance, Integrity, Respect, Kindness and Fairness. We also aim to develop from an early age the key characteristics of effective learning by encouraging students to engage with the UNESCO bespoke 21st Century Learning Skills, or 6C's - Caring, Creative, Critical Thinking, Communicators, Courageous and Cooperative. More information about our 6Cs can be found in our Learning and Teaching Policy.



1.Cooperation

2.Critical Thinking

3.Courage

4.Creativity

5.Communication

6.Caring

Welcome from the Head of Sixth Form

Dear Parents,

Welcome to The Sixth Form at Dubai British School Emirates Hills.

We aim to provide our post-16 students with a stimulating curriculum, leading to internationally recognised qualifications that form entry requirements for the leading institutions of Higher Education.

Our students are offered a broad and balanced curriculum combined with enrichment opportunities to aid their development into responsible members of the adult community. Students in our care are encouraged to gain additional experience through engaging in programmes such as:

- Duke of Edinburgh
- Extended Project Qualification (EPQ)
- Leadership Skills Foundation
- MOOC Courses
- Prefect Programme
- Peer Mentor Programme
- Model United Nations

A comprehensive school-wide extra-curricular programme enables our student to pursue interests in a wide range of activities from competitive sports teams, through to school band.

Our curriculum pathways enable all students to gain access to the world's leading universities. We offer both the A - Level Pathway and vocational BTEC Programmes, or as appropriate, a blended mix.

Consequently our alumni go on to study a broad range of exciting courses at world-renowned establishments, including Oxford University, the University of Cambridge, and John Hopkins University to read anything from Medicine and Law, through to Criminology and Property Management.

We are proud to have been awarded the Outstanding rating by DSIB as well as British Schools Overseas and truly believe that students live our mission to 'Enjoy, Aspire and Achieve'. We recognise the importance of personalised learning, empowering every student in our care to aim high and reach their academic potential, in a supportive, community-based environment.



Emma Pennock
Head of Sixth Form

Meet the Team

OUR LEADERS

Here are the names, faces and contact details of the leaders relevant to Sixth Form Students and Parents. Although your child's Form Tutor or subject teacher should always be your first port of call, you can also contact our leaders if teachers are unable to answer your query.



Brett Girven
Principal
principalpa@dubaibritishschool.ae



David Potts
Secondary Headteacher
headspa@dubaibritishschool.ae



Sheridan Teasel
Deputy Headteacher
steasel@dubaibritishschool.ae



Jacqueline Baxter
Head of Inclusion
jbaxter@dubaibritishschool.ae



Ian Barfoot
Head of University and Career Guidance
ibarfoot@dubaibritishschool.ae



Emma Pennock
Assistant Headteacher:
Head of Sixth Form
epennock@dubaibritishschool.ae



Catherine McGurk
Assistant Headteacher:
Sixth Form
cmcgurk@dubaibritishschool.ae

Sixth Form Curriculum Pathways

Welcome to your Key Stage 5 Options Prospectus

Our aim at Dubai British School Emirates Hills is to provide our Post-16 students with a stimulating, purposeful and balanced curriculum, leading to qualifications that are internationally recognised and accepted as entry requirements for Higher Education.

The purpose of this booklet is to:

- Present to parents and students the courses which are planned for A Levels and BTEC studies from September 2024
- Outline the content of each specification, as well as the course structure and assessment criteria
- Help you make informed decisions appropriate for the subsequent stages of student life

At DBSEH there is a wide range of options available with three academic pathways on offer to our Sixth Form students:



1. GCE Advanced Level (A Level)

Students can choose to study three A Level subjects and will undertake all units listed for the stand-alone A Level qualification at the end of Year 13. Students who wish to study more than three subjects will need to have this agreed with the Head of Sixth Form.

2. BTEC–Level 3 Qualifications

Students can choose to study three BTEC courses. For this academic year, we are looking to offer BTEC Double Award Business, (worth two BTECs), BTEC Single Award Business, Travel and Tourism, ICT, Sport and Art & Design.

The BTEC programme provides a specialist work-related programme of study that covers the key knowledge and practical skills required. It offers flexibility and a choice of emphasis through the specialist units. The qualifications offer an engaging programme for those who are clear about the area of employment that they wish to enter. The courses are practical and vocational and are closely linked to the world of work.

3. A blended curriculum of A Level and BTEC

Our option blocks are designed so that students may study a combination of A Level and BTEC courses. Students can select two A Levels and one BTEC or one A Level and two BTEC subjects.



Sixth Form Curriculum Pathways

At DBSEH we offer flexibility for Sixth Form pathways where students can choose a combination of A Levels and BTECs. It is expected that the majority of students will complete the equivalent of three A Levels.

Entry onto Sixth Form study is conditional and therefore dependent upon students obtaining the (I)GCSE grade requirement for that individual subject and the general requirements for A Level courses.

Option Blocks

Students will choose three subjects from the five option blocks. Students wishing to study a combination of four subjects from the blocks below must arrange a meeting with Mrs. Pennock, Head of Sixth Form.



Block A	Block B	Block C	Block D	Block E
BTEC IT	BTEC Business	BTEC Double Business	*BTEC Performing Arts	*BTEC Travel & Tourism
French	Art	Business	Media	Biology
Geography	A Level PE	Chemistry	Physics	Computer Science
History	Economics	English Language	Psychology	English Literature
Maths	Further Maths	*Spanish		Maths
	Maths			

*More flexibility to move block

This blocking structure is indicative of the general pattern, it can be subject to change from year to year.

N.B. Arabic is only available to native Arabic speakers. This is a statutory requirement linked to the KHDA curriculum. Students will be assigned lessons for Arabic once the final option choices have been made.

Entry Requirements

The Sixth Form is open to all who are qualified by ability and attitude. Generally, those who are admitted to the Sixth Form will have a range of examination success at (I)GCSE Level and will be capable of moving on to more advanced study. It may, however, be necessary to advise students who have a record of poor attendance or attitude to study that they are unlikely to benefit from a Sixth Form course.

A LEVEL/COMBINED BTEC AND A LEVEL ENTRY REQUIREMENTS:

- Students must have a total of six 9-5 (A*- C) (I)GCSE Grades (or equivalent)
- Have a minimum of a grade 6 in the subjects chosen at A Level
- Mathematics requires a minimum of a 7
- Biology/Chemistry/Physics requires a minimum of a 7/7 from combined GCSE
- English Language/English Literature requires a minimum of a 8
- Language applicants must meet with departmental staff before commencing the course
- Any student wishing to study four courses in the Sixth Form must attain an average GCSE grade of 8

BTEC NATIONAL DIPLOMA/AWARD PATHWAY ENTRY REQUIREMENTS:

- Students must have a total of four 9-4 Grades at (I)GCSE Level, including Mathematics and English Language
- Entry onto BTEC is at the discretion of the Head of Sixth Form



Entry Requirements

Pathways beyond Sixth Form:

Almost all of our students go on to study full-time for a degree when they leave DBS EH. If, however, students are considering an alternative pathway, like an apprenticeship, gap year or employment, please see Mr Barfoot to discuss a plan to make your transition as smooth as possible.

For those students intending to undertake higher education, it is important to start research about countries, institutions, courses and their requirements as early as possible, to ensure an achievable 'Plan A,' is in place, but that consideration is given to a 'Plan B' as well.

Regardless of a student's intended destination country, Unifrog should be the start point for that research; entry requirements can be used to filter universities into 'aspirational,' 'target' and 'safe' categories based on a student's likely attainment and there's a huge amount of other relevant information to be found there as well.

Be aware of the following general principles:

- North American universities tend not to stipulate specific combinations of A-Level/BTEC subjects although the most selective universities in the US and Canada are not likely to recognise BTEC.
- Dutch universities are generally flexible with regards to A-Level/BTEC subject combinations and grade requirements, but again, the most selective 'Research Universities' will not recognise BTEC and may not recognise some A-Level subjects either.
- UK universities could make an offer that is conditional on achieving a specific set of grades in the subjects chosen, or they could make a UCAS tariff points offer.

Predicted Grades for University Applications

Students will be provided with A level/BTEC grade predictions in Term 1 of Y13 to support university applications. These predictions will be derived only from data taken from formal internal assessments undertaken by all students in the cohort and will be heavily influenced by the outcome of the End of Year 12 exams held in the June of Year 12.



Inclusion Department

INCLUSION SUPPORT

Our vision 'Enjoy, Aspire, Achieve' applies to every student who attends DBS Emirates Hills.

Since our establishment, we have prided ourselves on being an inclusive school supporting a diverse range of pupil needs. We are proud to have a strong inclusion team of Teachers and Learning Assistants, with a wide range of expertise, skills and qualifications to ensure that every student's needs can be identified swiftly and supported appropriately.

Early intervention is a key factor in determining student success. This, alongside strong parent partnerships, are essential components of our support strategy. Therefore, If you have a concern regarding your child's learning please do speak to your child's teacher in the first instance. Our staff will be able to best advise you on how to take your concern forward. Equally if our staff have any concerns about your child they will raise them directly with you before proceeding with any intervention.

Where students do need an additional layer of support, we ensure that parents' queries and concerns about their child's development are discussed openly and thoroughly before putting a support plan in place. Once these conversations have happened together, the school and parents collaborate to devise a personalised educational plan for their child, which meets both the child's academic and pastoral needs.

The nature and level of the support we offer depends on the needs of your child and can be short or long term, individual or group, within the classroom or outside of the classroom. We tailor support for every child differently. Rigorous monitoring procedures around every intervention ensure that however we are supporting your child, we know that it is making an impact. Additionally, the traditional curriculum is not always suited to all. Consequently we can also offer bespoke curriculum pathways to meet every student's needs.

If more specialised intervention is required we liaise closely with outside agencies including educational psychologists, occupational therapists and speech therapists. These agencies work in partnership with both the teachers and parents, offering advice and guidance on adaptations that may be required.

We are committed to nurturing every pupil and empower successful, well rounded individuals, equipping them with the skills essential for life-long learning.



Jackie Baxter
Head of Inclusion

Student Wellbeing

In addition to academic subjects, all students within the Sixth Form will follow a programme of **PSHE** and **Moral Education**.

Moral Education

Students will continue to study the compulsory Moral Education curriculum in Years 12 and 13. Topics they will cover are delivered through the 4 Pillars of Character and Morality, Individual and Community, Civic Studies and Cultural Studies. Through these topic headings pupils will develop their understanding of personal, local and global issues. Pupils will also focus on developing their awareness of a shared human experience, developing the values they hold and understanding others in an ever-changing diverse world. Pupils will be assessed during the academic year and in Year 13 pupils will engage with an independent research project.

PSHE (Personal, Social and Health Education)

This is a programme designed to provide time and resources for university applications, in addition to supporting students developing the knowledge and skills required to move from Sixth Form into university life and/or the world of work.

Some of the topics covered include Banking and Finance, International Laws and Regulations, Emergency First Aid, Needlework and Cooking on a Budget! The programme is offered one period per week and will be led by the Sixth Form Team.

The Sixth Form and Careers Team work to provide a structure that ensures students are prepared for application deadlines to institutions of higher education worldwide. Students will be invited to a host of University talks, in addition to being provided with regular target setting with a career focus.



Career Guidance

Provision of Careers Education, Information and Guidance (CEIAG) continues to expand at DBSEH; now COVID restrictions have eased, and students over the age of 15 are legally allowed to work part-time in the UAE, students will be afforded greater opportunities to engage with the workplace, higher education and employers than ever before.

Our primary resource in school remains the CEIAG platform, Unifrog (www.unifrog.org) that all students and parents from Year 9 upwards have access to.

Students from Year 8 upwards carry out CEIAG activities appropriate to their age; most of these activities are delivered as part of the PSHE programme; some are delivered at specific times in the school year when they relate to key transition points.

Senior students receive bespoke advice and guidance relating to their subject choices at

and beyond DBSEH, as well as a number of sessions that develop students' professional, academic and domestic skills in preparation for life after DBS EH.

Mr Barfoot's role as Head of University and Career Guidance is to equip students with the skills to use information about their next steps effectively.

Should you have any questions about CEIAG provision at DBS EH, please contact: **ibarfoot@dubaibritishschool.ae**



School Counsellors

Dear Parents,

We are the counselling team here at DBS EH and we are looking forward to welcoming you and your children to our wonderful community. We meet with all new students to introduce ourselves and let them know where to find us if they need support.

Our role as School Counsellors is to work with students, parents, teachers and outside agencies to support the social and emotional development of students. This involves providing confidential individual and group counselling in the areas of personal, social and emotional needs. During counselling sessions we help students with issues such as problem solving, emotional difficulties, general coping strategies, setting and achieving goals, developing self-esteem, peer relationships and social skills.

Some common challenges that bring students and families to counselling are:

Change (transitions)

- Transfer to or from a different school
- Family separation, changing roles or relocation
- Reallocation of teachers

Personal, Social and Emotional Development

- Grief and loss
- Trauma and crisis intervention
- Social relationships
- Cultural and ethnic differences

Family issues

- Challenging behaviours at school and home
- Family discord
- Financial pressures

Schooling issues

- Special Educational Needs
- Academic or exam related stress

In Sixth Form, referrals can be made by parents, through the pastoral team or by students themselves. It is our protocol at Dubai British School to work in partnership with parents wherever possible. However, as per our Counselling Policy, secondary students can consent to counselling if they are of sufficient understanding and intelligence to understand the process. Children and Young People have the right to refuse or discontinue counselling at any time as they will only benefit from the support if they want to be involved.

We also organise 'Let's Talk' coffee mornings for parents and would love to hear from you if you have specific requests for topics you would like to see covered. We are available to meet with parents (by appointment) to discuss any social/emotional concerns.

We look forward to working with you.



Gail Gallagher
Whole School Counsellor

Medical Team

WELCOME FROM THE MEDICAL TEAM

We would like to extend a very warm welcome to all students and their parents. We are looking forward to working with you and your children here at Dubai British School Emirates Hills. To ensure your child's health and safety we would like to share a few points with you.

We shall be present at all times during the school day to administer first aid as required. Children who are taken ill at school will be cared for by us until they are fit enough to return to class or a parent/guardian can be contacted and arrangements made for them to be collected and taken home.

Please also be aware that children are not allowed to go home via taxi unless escorted by a parent/guardian. The expected pick up time is 15-20 minutes.

If your child has a persistent condition, allergy or medical condition that the school should be aware of, please specify in detail the nature of the condition, the signs and symptoms and any medication that may need to be administered.

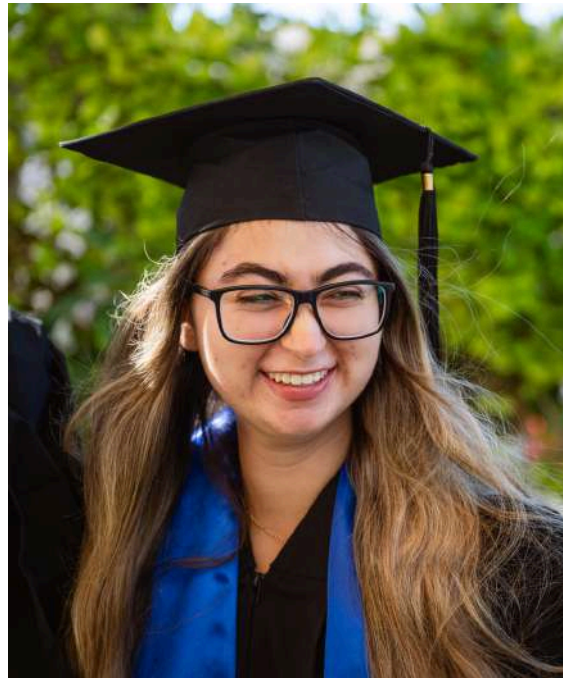
If you have not completed the school's medical form, please ensure that this is completed and returned, along with a copy of all childhood vaccinations, prior to schools commencement.

If you have any further queries, please do not hesitate to contact us. We look forward to a safe and healthy school year. Thank you for your understanding and co-operation.

School Medical Team

nurseclinic@dubaibritishschool.ae

doctor@dubaibritishschool.ae



Wider Opportunities

To complement the pathway our Sixth Form students decide to undertake, we offer a range of wider opportunities. Students can shape the school experience for themselves and their peers. Student Leaders garner key experience in contributing to strategic planning and school improvement; valuable experience for the work place in later life, as well as our extra-curricular opportunities which enrich students' passions, skills and expertise.

SIXTH FORM PREFECTS:

The Prefect body meets with the school council team as well as the Head of Secondary and the Principal regularly to discuss issues and help bring about positive change in the school. The Prefect body is made up of the Head Girl, Head Boy, Deputy Head Girl, Deputy Head Boy and Prefects.



STUDENT AGENCY:

In many ways every pastoral activity mentioned in this section encourages the development of student agency. DBSEH is committed to ensuring that all its students have the right to express their voice and opinions. We consider students as partners in their own development and by providing children with broad opportunities to develop their voice. We aim to ensure our students are fully equipped with the life skills needed for success in the 21st century.



SIXTH FORM PEER MENTORS:

Peer Mentors from the Sixth Form are assigned to each Key Stage 3 tutor group to provide student to student mentoring, in the shape of support and guidance through the year.



Wider Opportunities

SCHOOL COUNCILLORS:

This is run by the Heads of the School Council who are appointed from the prefect body. Two students from each form are elected to represent their year in the School Council. The School Council has many responsibilities, however ultimately they are required to help develop the school and continue to improve the environment for the students.



DUKE OF EDINBURGH INTERNATIONAL AWARDS:

The Duke of Edinburgh's International Award is the world's leading achievement award for young people.

At DBSEH the Bronze and Silver awards complete their exhibition in the UAE desert and the Gold award have traditionally completed their journey in Nepal and more recently in Sri Lanka.

If you would like to see what opportunities are available to your child, kindly email Mr MacLean, our Duke of Edinburgh Coordinator:
vmaclean@dubaibritishschool.ae.



SIXTH FORM TEAMS:

The opportunity to join a number of Sixth Form Sports Teams are open to you, regardless of course choice if you are taking Sport BTEC. It's a great opportunity to mix with peers and represent DBSEH in football, netball, basketball, swimming, rounders and athletics to name just a few.



After School Life at DBSEH

ENRICHMENT PROGRAMME AND EXTRA-CURRICULAR ACTIVITIES (ECAS)

DBSEH offers a wide variety of Enrichment Programmes. You will receive the options booklet for each term via email after the term starts, along with instructions on how to sign up. Many of our activities are run by staff and there is no fee. We also offer Extra School Activities run by external companies who require a fee for participation.



ADDITIONAL PERFORMING ARTS LESSONS

Centre for Musical Arts and Dubai Performing Arts provide classes that run during the school day, on a rotating timetable, and will be taught by specialist teachers. For more information or to register please contact Sara Ingham on: dbs@cmadubai.com or visit <http://www.cmadubai.com/en/dbseh>.



Getting ready to start

2025/26 IMPORTANT DATES FOR YOUR DIARY

Our calendar of key dates for the upcoming academic year will be published on our website and sent closer to the start of the new academic year. Please note if there are any changes you will be updated via email.

START OF TERM FOR YEAR 10, 11, 12, 13

Tuesday 26th August

Sixth Form students may enter the main school building via the fishbowls from 7:30am onwards and go to their class. If students opt to ride their bike or scooter to school, they can park it outside in the bike racks.

New students in Year 10 and 12 may visit DBSEH to see Mrs Pennock and Ms Potter at 11.00am on Friday 22nd August if required.



School Life at DBSEH

SIXTH FORM SCHOOL DAY TIMINGS

Doors open from 7:30am

- 7:55am to 3:30pm Monday to Thursday
- 7:55am to 12:00pm on a Friday



LATE ARRIVALS

Students are required to arrive on time for school. If arriving late, parents must report to Reception. Students will not be able to access classes without first visiting Reception and collecting a 'Late' slip.

ABSENCES AND SICKNESS

If a student is absent, please phone the Reception team on: **04 361 9361** before 8.00am and the reason will be recorded. Alternatively please email your child's Class Teacher and copy in the nurses: nurseclinic@dubaibritishschool.ae and Reception: reception@dubaibritishschool.ae.

If your child is seriously unwell, please keep your child at home until they are fit to attend school.

Children must be fever-free and free from diarrhoea for a full 24 hours before returning to school after illness. After 3 consecutive days of absence, a doctor's note will need to be provided.

Sixth Form Supplies Needed

Subjects	A LEVEL
General equipment for all Subjects	A4 Lined paper (hole punched with margin) Plastic wallet A4 Dividers Standard, r ring ringbinder: Geography (x2), History (x2), French (x2), Spanish (x2), Psychology (x3), Economics (x3), Business (x3), Maths (x2)
Business studies	Calculator
Mathematics	Classwizz fx-991EX Scientific calculator Maths geometry set including Protractor, compasses, ruler, highlighter, pencil Optional extra: Casio FX CG50 Graphical calculator
Art	"A3 hardcover sketchbook min. 100gsm and 50+ pages; drawing pencil set (range from 2H, HB, 2B, 4B, 6B), kneadable eraser, plastic paint mixing palette with lid, A4 plastic zip folder Recommended at home: watercolour paint set, acrylic paint set, assorted paintbrushes, artist-quality colouring pencils, selection of pens and markers (white, black, silver, gold)"
Science	All scientific calculator, geometry set including protractor, compasses, ruler, highlighter, "green, red, and purple pens, pencil" Yr 13 Biology optional field trip 1st Term; 350AED
PE Core and Examination	PE Kit available from Magrudys Team kit from Kukri stock shop for your sport. SLA2 year 12 require the Leaders T-shirt from Kukri.
Psychology	Scientific calculator

School Times & Absences

SCHOOL DAY TIMINGS

Sixth Form:

Doors open from 7:30am

- 7:55am to 3:30pm Monday to Thursday
- 7:55am to 12:00pm on a Friday.

LATE ARRIVALS:

Students are required to arrive on time for school. If arriving late, parents must report to Reception. Students will not be able to access classes without first visiting Reception and collecting a 'Late' slip.

ABSENCES AND SICKNESS

If a student is absent, please phone the Reception team on: 04 361 9361 before 8:00am and the reason will be recorded. Alternatively please email your child's Form Tutor and copy in the nurses: nurseclinic@dubaibritishschool.ae.

If your child is seriously unwell, please keep your child at home until they are fit to attend school.

Children must be fever-free and free from diarrhoea for a full 24 hours before returning to school after illness. After 3 consecutive days of absence, a doctor's note will need to be provided.

EMERGENCY LEAVE OR DOCTOR APPOINTMENTS:

Medical appointments should be arranged after school. However, we understand that this is not always possible and where this is the case please inform the Class Teacher and Reception on:

04 361 9361 or email:
reception@dubaibritishschool.ae.



Security ID Passes

SECURITY ID PASSES

All Sixth Formers are given a security ID pass. This must be worn at all times on the Sixth Form Lanyard and displayed around the neck.

As well as our Sixth Form Students, all visitors entering the school must have a valid Parent, Carer or Nanny ID pass. Please ensure you are always carrying your ID and visibly displaying the lanyard around your neck. Without a Parent, Carer or Nanny pass, visitors will be asked to provide photo ID by the security team at the gate before being allowed on to the campus.

To receive a Parent or Carer ID pass, please email a recent passport photo for each parent or carer to reception@dubaibritishschool.ae stating the parent's and student's full name and year group, or hand the passport photos into Reception.



To request an ID pass for a Nanny, please collect the application form from Reception or request the form via email from reception@dubaibritishschool.ae.

LEAVING SITE

Students from Year 12 have the opportunity to leave school during the lunch break to visit the Town Center behind DBSEH, where there is a supermarket, coffee shops and fast food chains. They must sign out when they leave the school site, and sign back in on their return using the facial recognition sign-in system.

Students must wear their lanyards and adhere to the school's behavioural expectations while off site. They are still held to account by the school for their behaviour during this time.

CAFÉ

Alternatively, Sixth Form students can purchase food and drinks from the on site school Canteen.

Should they wish to bring their own food to school, kindly note that we encourage a healthy eating policy, therefore they are not permitted chocolate, sweets or fizzy drinks on site.

Please note that we have students on site with fatal nut allergies. Nuts or products containing nuts must not be included in packed lunches. We are also a pork free school.

Bring Your Own Device

DBS Emirates Hills has a Bring Your Own Device (BYOD) program for Year 3-13 students. BYOD refers to where students bring a personally-owned and school-approved device to school.

By bringing their own device, students will learn how to use technology to support themselves; utilising specific tools to support their learning style, as well as knowledge-based apps which they can rely on to secure key learning facts. Teachers also share banks of resources via the devices for students to be able to revisit and revise as little or often as they would like. Further up the school students will utilise word-processing skills to prepare them for the realities of 21st century communication beyond the school walls.

The school can provide the ability to connect compatible devices to a filtered and secure internet service, with stringent firewalls and security measures to protect all of our students. From the youngest years in Primary, students are taught specific skills in online safety and the BYOD scheme provides opportunities for students to independently apply these skills in a safe environment.

STUDENT DEVICES IN SIXTH FORM

While we do not have strict device requirements in secondary school, we encourage a transition to a laptop to better meet their academic needs. Although we do not mandate a specific model or brand, please note that the majority of our digital tools and platforms are Microsoft-based.

Beyond these recommendations, no additional specifications are required. Should you have any questions about device compatibility or support, please don't hesitate to contact us.

You can purchase the school-approved Apple products here: <https://dubaibritishschool.jtrs.ae>

MOBILE PHONES

Sixth Form Students can use their Mobile Phones in the Sixth Form centre and will be allowed to Access the DBSEH Wireless Network.

House Allocation

HOUSE ALLOCATION

A big part of our community spirit is rooted in our House System. Every student is allocated to a school 'house' upon accepting a place. Please purchase the relevant House badge from Magrudy's and iron onto the sleeve of your child's PE shirt. Along with this handbook, you should receive your child's House. Please refer to the email you have received from Admissions.

Students will be encouraged to wear their house colours during competitions throughout the year.

- **Falcons - Blue**
- **Vipers - Red**
- **Scorpions - Green**
- **Wildcats - Yellow**

HOUSE SYSTEM:

The DBSEH house system provides a sense of shared identity and community between our students in different classes and year groups.

The school's reward system builds upon the house system allowing the students to earn merit points which have value both for themselves and for their house.

As students move through the school they are open to take part in regular house events, which could be academic (reading, spelling bees, writing competitions); sporting (athletics, swimming galas, cross country), extra curricular (bake-offs, designing, musical performances) and allow each student to be recognised and celebrated for their unique interests, skills and talents.



FALCON HOUSE



SCORPION HOUSE



VIPER HOUSE



WILDCAT HOUSE

Photo Permission

SOCIAL MEDIA PERMISSION

DBS Emirates Hills uses many social media platforms to communicate with our community. These are dedicated spaces for the marketing team and Class Teachers to share exciting photos and videos of the daily activities, different events, competitions and beautiful work, in and around our school.

If you do not wish for your child to be included in these photographs, please complete the opt out form found [here](#).

MAIN SCHOOL SOCIAL MEDIA ACCOUNTS:

- @dubaibritishsch - For Instagram and Facebook
- @DBSEH_Sports - For our Sport and PE Instagram
- @dbsehsixthform - For our Sixth Form Instagram
- @dbseh_art - For our Art Instagram



Parent Involvement

PARENT PARTNERSHIP

At DBS Emirates Hills, we work hard to create a community, family-feel environment within our school, welcoming parents as equal partners in their children's education and encourage strong links between home and school.

PARENTAL PARTNERSHIP ACTIVITIES MAY INCLUDE:

- Attendance at coffee mornings
- Attendance at school information sharing sessions and courses
- Membership of our School Advisory Board (SAB)
- Volunteering to help the PTA
- Volunteering to help with school excursions and events



Please keep an eye out for our newsletters and events to find out how you can get involved.

PARENT & TEACHER ASSOCIATION

Meet our PTA (Parents and Teachers Association) to learn more about what they do and to see how you can get involved. Whether you can volunteer an hour at an event, a few hours monthly or you would be interested in supporting the PTA through your business, please come along or get in touch with our PTA Chairperson at pta@dubaibritishschool.ae.

There are many PTA events run throughout the year for the students from FS, Primary through to Secondary (and some even, just for the adults!).



School Calendar

IMPORTANT DATES FOR 2025/2026

TERM 1	
Start of Academic Term	25 August 2025
Prophets Birthday	04 September 2025*
Half Term Break	13 - 17 October 2025
Commemoration Day	30 November 2025*
UAE National Day	02- 03 December 2025*
Last Day of Term 1	12 December 2025
Winter Break	15 December - 2 January 2026

TERM 2	
First day of Term 2 / Classes Resume	05 January 2026
Mid-Term Break	09- 10 February 2026
Start of Ramadan	17 February 2026*
Last Day of Term 2	18 March 2026
Spring Break	23 March - 03 April 2026
Eid Al Fitr	19 March - 20 March 2026*

TERM 3	
First Day of Term 3 / Classes Resume	06 April 2026
Eid Al Adha	26-29 May 2026*
Islamic New Year	16 June 2026*
End of Academic Year	02 July 2026

**Days of Islamic holidays and the start of Ramadan are subject to moon sightings and may differ from the date given.*

Contact Details

Contact Us

Having read this Handbook we hope that you are starting to get a sense of our school community, and recognise a few key names and faces.

If anything has been unclear in this guide or you have questions about something not covered in these pages, please do contact us. Until your child's Form Tutor has been assigned and communicated to you, please direct all enquiries through our reception team who will find the right person to respond to you.

As a reminder, once term commences please contact your child's Form Tutor or Subject Teacher in the first instance. If, for whatever reason they are unable to resolve your query, please approach the next relevant leader. All contact details are listed below.

Department	Name	Contact
Reception	Carla Jane Disley Indira May Guerra	reception@dubaibritishschool.ae
Admissions	Melissa Mendes	admissionsmng@dubaibritishschool.ae
	Admissions Assistant	admissions@dubaibritishschool.ae
Principal	Brett Girven	principalPA@dubaibritishschool.ae
Head of Secondary	David Potts	headsPA@dubaibritishschool.ae
Deputy Head of Secondary	Sheridan Teasel	steasel@dubaibritishschool.ae
Assistant Headteacher (Pastoral) and Head of Sixth Form	Emma Pennock	epennock@dubaibritishschool.ae
Assistant Head of Sixth Form	Catherine McGurk	cmcgurk@dubaibritishschool.ae
Head of Inclusion	Jacqueline Baxter	jbaxter@dubaibritishschool.ae
Health Clinic	Doctor Senior Nurse Nurse	nurseclinic@dubaibritishschool.ae
Counsellors	Gail Gallagher	ggallagher@dubaibritishschool.ae
IT (BYOD)	Sayuj Kuniyil	itsupport@dubaibritishschool.ae
	Hidayat Parambil	
Exams Officer		examinations@dubaibritishschool.ae
Accounts	Raquel Fajardo	accounts@dubaibritishschool.ae
iSAMS	Joy Montilla	dbsisams@dubaibritishschool.ae